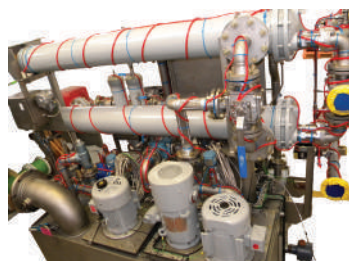


Distribution International's MIT brand specializes in design, specification, manufacture, and installation of both custom and standard removable/reusable insulation systems. MIT's team of in-house designers custom engineer solutions for your project needs. As part of DI's expansive supply network, MIT has the ability to deliver products and services worldwide.

<p>Heat Holder Brand Custom Sewn Covers</p> <ul style="list-style-type: none"> • Valves • Regulating Valves • ANSI Class Pumps • DP Cell Transmitters • Quik-Wrap • Fits-All <p>Instrument & Sensor Blankets</p> <ul style="list-style-type: none"> • DP Cells • Transmitters • Specialty Items for Any Application 	<p>Steam Turbines</p> <ul style="list-style-type: none"> • GE, Westinghouse, ABB <p>Unipad™ UL1709 Fire Blankets</p> <ul style="list-style-type: none"> • Valve Actuators, Cable Trays, Conduit <p>Valve & Pump Covers</p> <ul style="list-style-type: none"> • ANSI and Custom Built Applications <p>Exhaust Manifolds</p> <ul style="list-style-type: none"> • Custom Built For All Engine Applications
<p>Acoustical Covers</p> <ul style="list-style-type: none"> • Exhaust Systems • Blower Housings • Duct Systems • Custom Built for All Applications <p>Heat Exchangers</p> <ul style="list-style-type: none"> • Custom designed by our in-house designers • All environments and temperature ranges 	<p>Gas Turbines</p> <ul style="list-style-type: none"> • FR6 • FR5 • FR7 • 501 • 251 <p>Electric Heat Trace</p> <ul style="list-style-type: none"> • Main and Ancillary Skids of all Types • CO2 and Cal-Gas Bottles • Custom Designed for All Applications



Services

Engineering

- Thermal Analysis
- CAD and Custom Field Design
- Design rendering from customer prints, engineering models, or existing parts

Quality Assurance

- Extensive QA/QC requirements to meet marine, OEM, aerospace, government, and industrial markets

Manufacturing

- State-of-the-art production facility
- Experienced fabricators
- Made in the USA

Field Fabrication and Installation

- MIT's team of experts provides on-site design, construction, and installation of heat trace and covers

MIT is one of the largest manufacturers of specialty reusable insulation products in the U.S. Our knowledgeable staff offers a variety of expertise for all applications of reusable systems. In addition, we provide the distinctive capability to design and install heat trace systems coupled with removable blankets.

DI/MIT provides unparalleled local support for delivery, installation, custom fabrication, and consulting services. Many of our customers do business around the world and our team in the export division is always ready to negotiate and expedite international orders and shipments. MIT has one of the fastest manufacture turn around times in the industry to accommodate project timelines and needs.

Industries

- Petrochemical • Power Generation • OEM • Aerospace • Marine • Processing and more

distributioninternational.com

Please contact a representative

713-675-0075

MIT_info@distributioninternational.com